

2020-2021 ANNUAL REPORT



**Real epilepsy help.
Here and now.**

WELCOME LETTER

A MESSAGE FROM OUR PRESIDENT & CEO



Dear Friends of Epilepsy Florida,

Epilepsy is a daily struggle. The struggle extends beyond the individual with epilepsy – to their family, friends, and community. And here in Florida, the net cast by epilepsy is large: over 500,000 Floridians living with epilepsy and add those who care for them and the number more than triples.

This year is our 50-year anniversary! It has been the mission of Epilepsy Florida to serve as Florida's epilepsy ally by connecting those in need to the help and resources they truly need – here and now. It's the power of local. These resources include case management, medical services, education, psychological services, family services support, and, if eligible, medications, clinics, and EEG and diagnostic testing.

Even through the COVID-19 pandemic, we've been able to maintain our services and accomplish our goal of helping individuals affected by epilepsy. During the pandemic, our clients have struggled with continued social isolation, and many of our families dealt with difficult decisions, like how to pay for rent or food, while their loved ones experienced an increase in seizures due to stress. These challenges pushed us to work even harder to provide uninterrupted service and the highest level of support and care for Floridians with epilepsy. I'm proud to share **we directly impacted nearly 8,500 individuals living with epilepsy** with direct services this year alone and we educated over 14,000 people about epilepsy.

The following pages of this short annual report will highlight even more progress made by Epilepsy Florida in the 2020-2021 year. While we continue to live through unparalleled times, one thing remains certain: our commitment to serving the thousands of individuals and families affected by epilepsy and seizures today. Thank you for your unwavering support as we look ahead – together.

Sincerely,

A handwritten signature in black ink that reads "Karen Basha Egozi". The signature is written in a cursive, flowing style.

Karen Basha Egozi

President & CEO

CURRENT BOARD OF DIRECTORS



Patricia Dean
Chair



Beth Alcalde
Vice Chair



Steve Feig
Member at Large



A.G. "Terry" Newmyer III
Treasurer



Sara Widing
Secretary



Adam Adache
Director



**State Representative
Nicholas X. Duran**
Director



Bryan P. Filson
Director



Carlos J. Gimenez
Director



Nick Hansen
Director



Melissa Hepler
Director



Hind Kettani, M.D.
Director



**Commissioner
Joe A. Martinez**
Director



**State Representative
Daniel Perez**
Director



Kala Rumalla, M.D.
Director

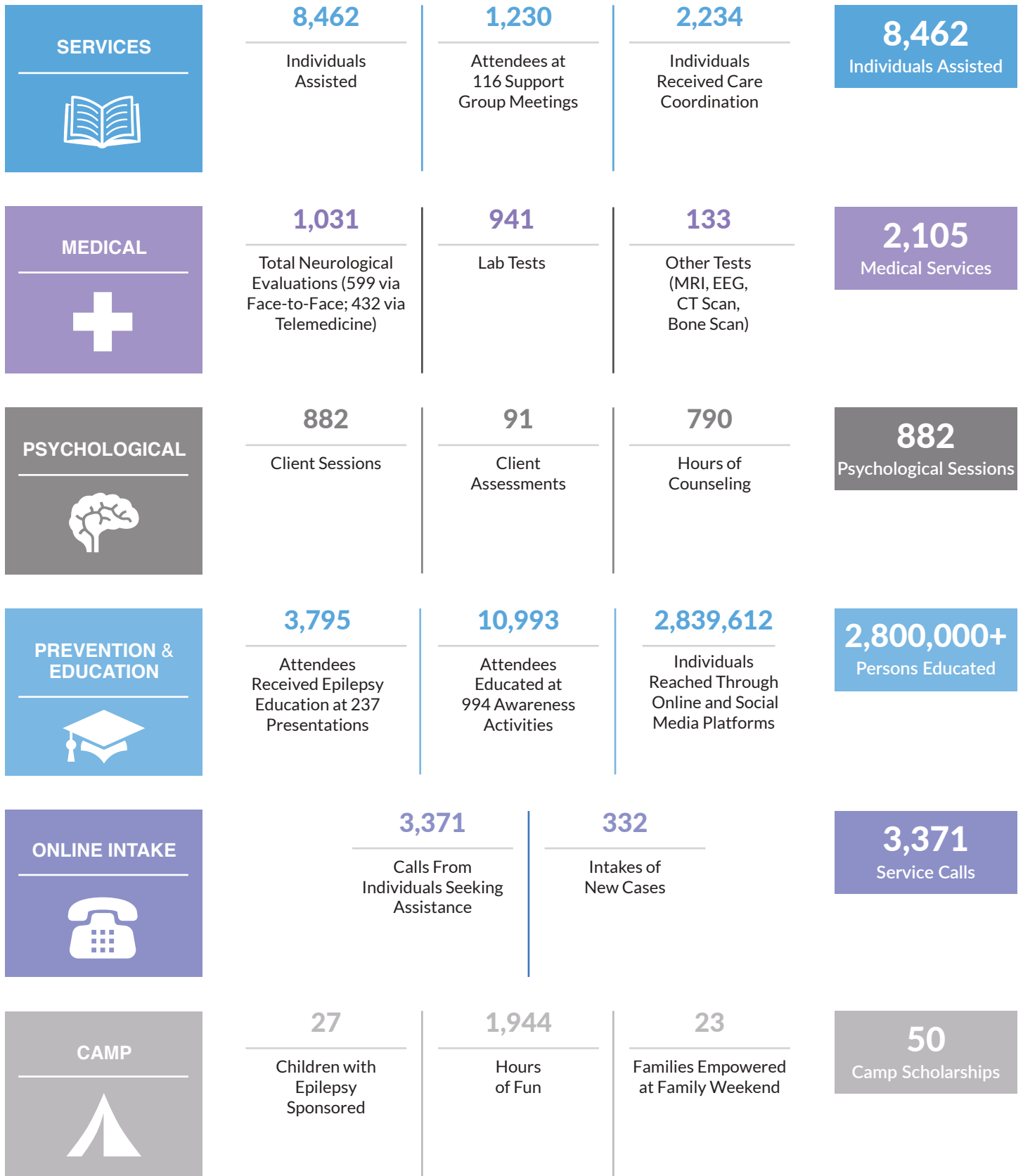


Steve Schale
Director



Tarek Zakaria, M.D.
Director

SERVICES



EVENTS & HIGHLIGHTS

Walk the Talk for Epilepsy



One virtual walk raised \$30,520

Let's Talk About It! November Epilepsy Awareness Month



Seizure Smart Symposium
Stuart



Peer to Peer Campaign

Two events raised more than \$109,350

Do-It-Yourself (DIY)/Special Events

Thank you to our dedicated supporters for hosting events in the community to help spread awareness and raise funds for individuals living with epilepsy!



Golf Outings



Game Dinners

Three DIY/special events raised \$130,390

Seizure Dog Program



Raised \$16,500

COVID-19 Relief Funds



Raised \$9,250

Healthcare Navigation Program

EFL Navigators assisted and educated



964,226 consumers

and reached 43,975,400+ via media coverage over the life span of the program



1,645

consumers received one-on-one Navigation services



1,082

consumers were assisted with enrollment in a Qualified Health Plan or Medicaid/CHIP

HIGHLIGHTS

Digital Media



Website

Sessions: **59.5k**
Users: **43.7k**
Pageviews: **203,000k+**
Pages/Session: **4.85**
Avg. Session Duration: **3.9**



Social Media

Total Followers: **25,013**
Total Reach/Impressions: **2,036,612**



Newsletter

Monthly e-newsletter has been sent out to a database of **more than 25,000 individuals** and growing.



Digital Fundraisers

\$15,890 in Facebook Fundraisers

Traditional Media



16
Featured
News Articles



1
TV News
Segment

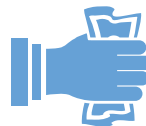
FOUNDATIONS, GOVERNMENT, & CORPORATE DONORS



\$3,069,770
in Grants & Government
Funding



\$107,055
in Corporate
Dollars



\$50,510
in Individual
Donations



\$7,450
in Bequests

AbbVie
AdventHealth
Aquestive Therapeutics
B Carlin Foundation
BB&T
Bluewater Construction
Bressman Animal Clinic DBA All Creatures
The Charles N. & Eleanor Knight Leigh
Foundation, Inc.
Clayton Feig Fund
Coconut Creek Automotive
Commissioners - Miami-Dade County
Curaleaf Florida, LLC
Community Agency Partnership Program
(CAPP) Alachua County
Di Pauli Family Found-Robert DiPauli
Dr. John T. Macdonald Foundation
Eisai, Inc.
Enterprise Holdings Foundation

Epilepsy Alliance America
Florida Blue Foundation
Florida Department of Health
Foreign Parts Distributors, Inc.
GFX, Inc.
Greenwich Biosciences, Inc.
GuideWell Innovation
Health Resources and Services
Administration
LivaNova
Medtronic
Memorial Healthcare System
Meridian Capital Group
Miami-Dade County
Michal Bander
Mickey Singer
Neurelis, Inc.
Perry Ellis
Pfizer, Inc.

PhRMA
Right Way Plumbing Co.
Silvester Foundation, Inc.
SK Life Science
Subaru, Inc.
The Garner Foundation, Inc.
The William Brown Foundation
Trulieve
UCB, Inc.
United Way of Escambia
United Way of Martin County
United Way of Miami-Dade
United Way of Palm Beach
University of South Florida
Victoria Creamer
Walmart
Zensah Company
Zogenix

1 IN 26

PEOPLE WILL DEVELOP EPILEPSY




1 IN 10

WILL HAVE A SEIZURE

500,000+

FLORIDIANS LIVE WITH EPILEPSY

For more information:
www.epilepsyfl.com
1-877-553-7453

 EpilepsyFL
 EpilepsyFLA
 EpilepsyFLA

 epilepsy
FLORIDA



Miami

**7300 N Kendall Drive, Suite 760
Miami, FL 33156**

Phone: (305) 670-4949
Fax: (305) 670-0904

Broward

**512 NE 3rd Avenue, 3rd Floor
Ft. Lauderdale, FL 33301**

Phone: (954) 779-1509
Fax: (954) 779-1549

West Palm Beach

**801 Northpoint Parkway
West Palm Beach, FL 33407**

Phone: (561) 478-6515
Fax: (561) 687-9318

Jacksonville

**5209 San Jose Blvd., Suite 102
Jacksonville, FL 32207**

Phone: (904) 731-3752
Fax: (904) 730-2329

Gainesville

**309 NE 1st Street, Suite 20 & 21
Gainesville, FL 32601**

Phone: (352) 378-4324
Fax: (352) 378-4227

Pensacola

**105 E. Gregory Square, Suite C
Pensacola, FL 32502**

Phone: (850) 433-1395
Fax: (850) 433-2006

Naples

**5450 YMCA Road, Suite 100
Naples, FL 34109**

Phone: (239) 778-8316
Fax: (239) 778-8317

Seven Offices Across Florida Serving 37 Counties

STAY CONNECTED



EPILEPSYFLA



EPILEPSYFL



EPILEPSYFLA

WWW.EPILEPSYFL.COM

Proud member of Epilepsy Alliance America